



## TRANSCENDENT VMS VIEWER FOR MAC OS X



- Multiple location monitoring of up to 2,000 total cameras!
- Supports up to 20 simultaneous screens with up to 100 cameras per screen for full video matrix wall support
- Offloading of encrypted video from a central management location
- Fully customizable enterprise level user & group permissions
- Versatile eMap screen configurations
- Independent prerecorded camera playback with simultaneous live viewing in multi view display format

# Contents

1	Software Introduction .....	3
1.1	Summary .....	3
1.2	Install and Uninstall .....	3
1.2.1	Install the Software .....	3
2	Login Software .....	5
2.1	Login .....	5
2.2	Control Panel Instruction .....	6
3	Device Management .....	8
3.1	Add Device .....	8
3.2	View, Change or Delete Device .....	9
3.3	Area and Camera Management .....	11
3.3.1	Area Management .....	11
3.3.2	Camera Management .....	12
4	Group and Scheme Setting .....	16
4.1	Create, Change or Delete the Camera Group .....	16
4.2	Add or Remove the Camera Group .....	17
4.3	Create, Change or Delete Group Dwell Scheme .....	17
4.3.1	Create Scheme .....	17
4.3.2	Change and Delete Group Dwell Scheme .....	17
5	Live Preview .....	18
5.1	Preview .....	19
5.1.1	Monitor Point Preview .....	19
5.1.2	Stop Preview .....	19
5.2	Dwell Preview .....	19
5.2.1	Group Dwell Preview .....	19
5.2.2	Scheme Dwell Preview .....	20
5.3	Preview Control .....	21
5.4	Snap .....	22
5.4.1	Snap .....	22
5.4.2	Snap Number .....	22
5.4.3	Snap Path .....	22
5.5	Multi-screen to Preview .....	22
5.6	Talk and Broadcast .....	23
5.6.1	Talk .....	23
5.6.2	Broadcast .....	23
5.7	PTZ Control .....	24
5.7.1	Parameter Configuration of PTZ .....	24
5.7.2	PTZ control .....	24
6	Playback Management .....	25
6.1.1	Playback by Setting Time .....	26
6.2	Snap When Playback .....	26
6.3	Download Record .....	26
6.4	View the Progress of Downloading .....	27
7	Alarm Management .....	28
7.1	Sensor Alarm .....	28
7.2	Motion Detection Alarm .....	29
7.3	Video Loss Alarm .....	29
7.4	Alarm Preview .....	29
7.4.1	Alarm Preview Configuration .....	30
7.4.2	Alarm Preview .....	30
8	Local Log .....	31

8.1	Search log .....	31
8.2	Log Maintenance .....	31
8.3	Export .....	31
9	User Management.....	32
9.1	Create a Resource with the Default Permission.....	32
9.2	Create, Change and Delete Users .....	32
9.3	Account Right Configuration.....	33
10	Basic .....	35
10.1	Location and Path .....	35
10.2	Backup and Restore .....	35
10.2.1	Backup System Configuration data .....	35
10.2.2	Restore System Configuration Data.....	35
10.3	Manually Trigger the Alarm Output .....	36

# 1 Software Introduction

In this chapter, you will read a detailed introduction of the operation environment, install & uninstall of this software.

## 1.1 Summary

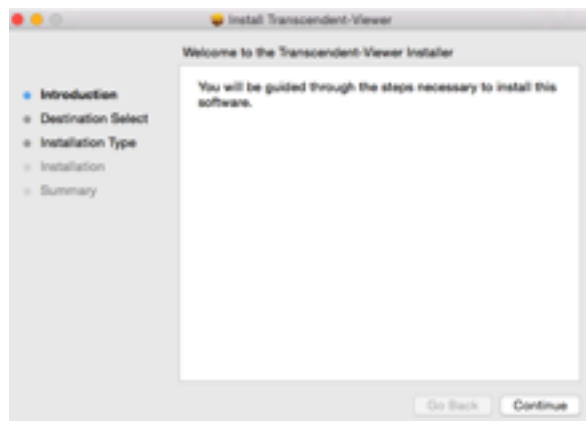
Transcendent MAC VMS is a Network Management Software, a powerful utility that allows you to control multiple recorders using one computer. This software allows you to view live video, search saved video, edit and configure setup device management, group and scheme settings, user account and permission, local log, basic configuration and alarm management on each recorder.

## 1.2 Install and Uninstall

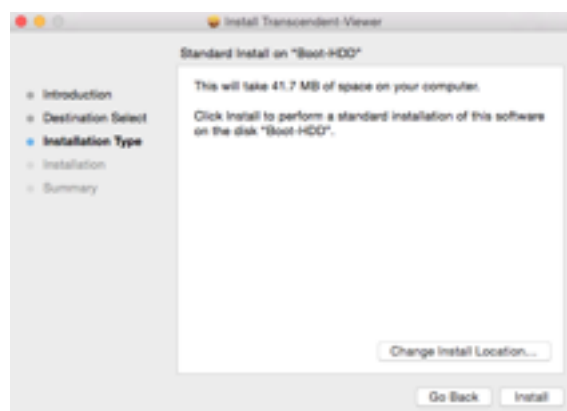
### 1.2.1 Install the Software

Before installation, please make sure that the OS version of your MAC is V10.7.5 or above.

Double click “TranscendentMacVMS.pkg” file to enter the Installation Wizard. Click **【Continue】** to install.



Choose the path you want to install the software by clicking “Change installation location”



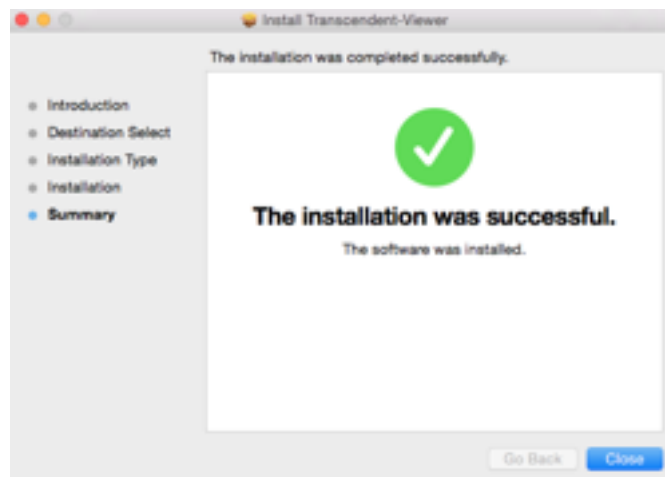
Select the disk you want to install the software and click **【Continue】** .



Input the name and password of your computer and then click **【Install Software】** button to install.



After the software is successfully installed, click **【Close】** to end.



## 2 Login Software

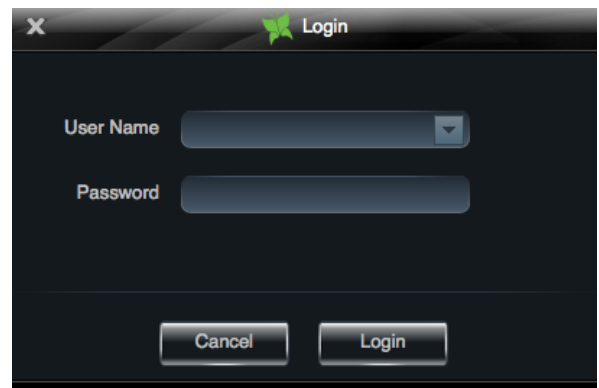
### 2.1 Login

**First time login:**

- ① The first time you run the Transcendent Mac VMS, you need to register a super administrator. Enter a Username and Password.
- ② To avoid forgetting the password, you can set some questions to help you find the password quickly.
- ③ After you input your username, password and set the questions and answers, click **【Register】** to register the super administrator.



Input the username and password created by you.  
Click **【Login】** to enter into the software.



## 2.2 Control Panel Instruction

The control panel of Transcendent Mac VMS is shown below.







There are five areas in the main interface of this software. The descriptions of each area are as follows :





Area	Description	Area	Description
1	Function Area	2	Tab Bar—to display the operated functions
3	Menu Bar	4	Alarm Information List.
5	Status information list		

Description of Menu Bar

Menu	Description
<b>Start</b>	Export the control panel, live preview, playback tab and lock or exit the client.
<b>View</b>	Export live preview, control panel, local log, alarm preview, playback, user account and permission, basic configuration and device management and organize the live view
<b>System</b>	Including lock client , broadcast to device, switch user, import or export configuration, etc.
<b>Help</b>	View user manual and software version

Descriptions of Function Module

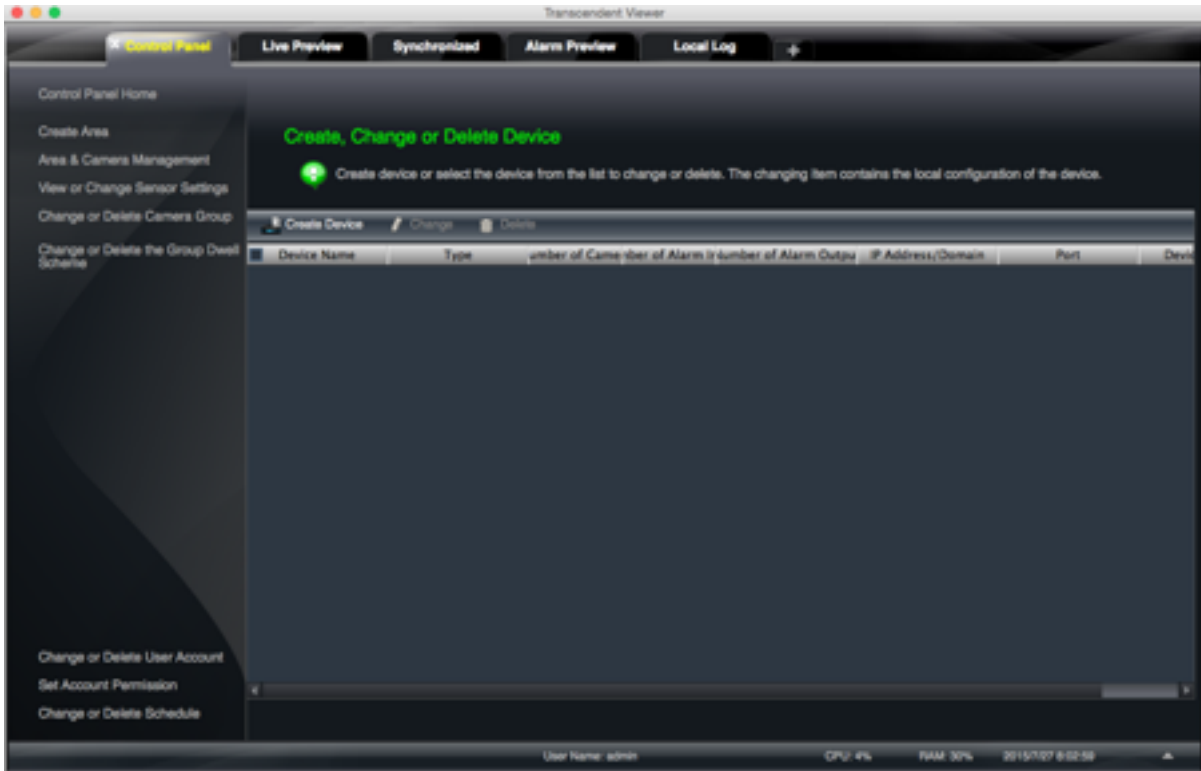
Menu	Description
	Live Preview: To view live images and record, snap, control PTZ, etc.
	Playback: To remotely play the local record.
	Device: To create, modify or delete areas, devices and cameras.
	Group and Scheme Settings: To create, modify or delete camera groups and schemes.

	User Management: To add, modify, delete user and user permission.
	Local Log: To search, view and backup local log.
	Basic: To setup record partition and path, system startup and maintenance & backup and restoration.
	Alarm Management: To add or remove the sensor of a area; To setup alarm trigger and modify the area of the sensor.



## 3 Device Management

In the control panel, click Device or  icon to enter the device management interface.



### 3.1 Add Device

Click  button to enter the interface.

- ① Select device type and input device name;
- ② Input IP address or domain, port of the device and then enter its user name and password.
- ③ Create an area. If you haven't created an area, click "Create a New Area" to create one.
- ④ Check "Upload bandwidth more than 2M" according to the actual network situation. Checking or not checking it will affect the stream choice of live preview.

**Note:** You can click "Create an Area" shortcut menu under Device to create an area in the control panel.


You can also check "Auto report" to add device. The setting steps are as follows:

- Choose the device type and check "Auto".
- Input device name.
- If you want to add DVR, please enter Network→Sever tab from device. Check "Enable", input IP address and port (2009) of Transcendent Mac VMS & device ID.
- If you want to add IP camera, please enter Network Configuration → Server Configuration. Check "Do you

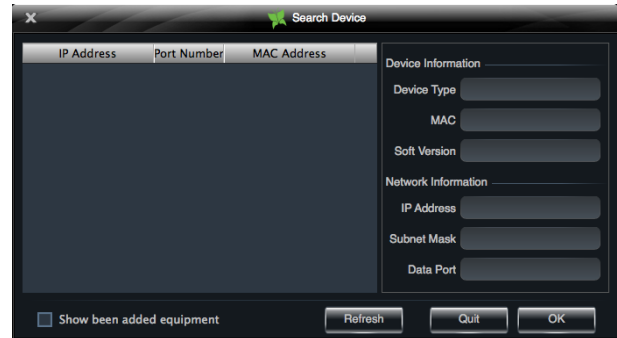
want IP camera to connect server” and input Transcendent Mac VMS Address, Port and Device ID.

- Input the Device ID according to the device ID of DVR or IP camera device.

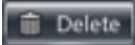
➤ **Add Online Devices**


Click  button to automatically search online devices in the local network. Click a device to display its basic information. Double click it to add it.

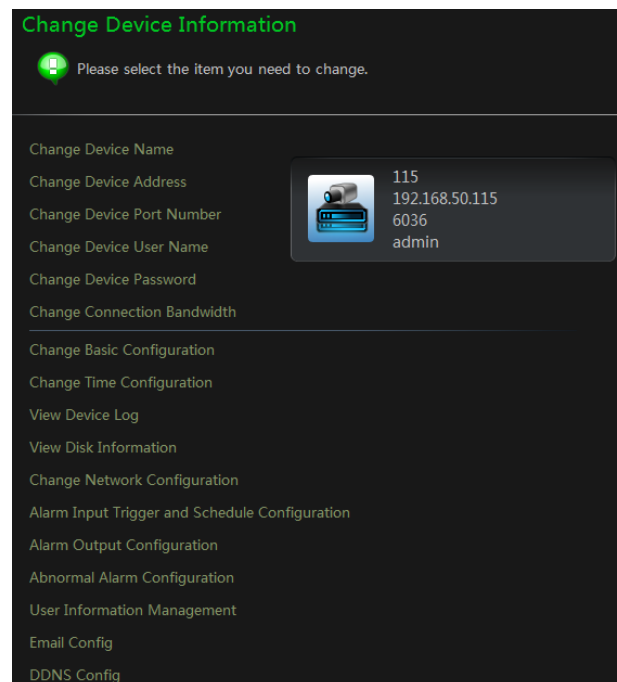
If the device is added, this device will be hidden in the search device interface.



### 3.2 View, Change or Delete Device

Select the added device and click  button to delete the device from the list.

Select the added device and click  to pop up a window. In this interface, you can change the device name, address, port, etc, or change basic configuration, time configuration, DDNS configuration and Email configuration, etc.



➤ **Change the Device Name**

Click **“Change Device Name”** to change the name of the selected device.

➤ **Change Device Address**

Click **“Change Device Address”** to change the IP address of the selected device.

➤ **Change Device Port Number**

Click **“Change the Port Number of Device”** to change port of the device selected.

➤ **Change Device User Name**

Click **“Change Device User Name”** to change the device account name.

➤ **Change Device Password**

Click **“Change Device Password”** to change device password.

➤ **Change Connection Bandwidth**

Check **“Upload bandwidth more than 2M”** according to the actual situation.

**Note:** Checking or not checking it will affect the stream choice of live preview.

#### ➤ Change Basic Configuration

Click “*Change Basic Configuration*” to pop up a dialog box. You can change the basic configuration of device and check “Permission Check” or “Record Coverage” according to the actual situation.

#### ➤ Change Time Configuration

Click “*Change Time Configuration*” to enter the interface. Change the time and date if needed.

Check “Sync by NTP Server” to synchronize with NTP server.

#### ➤ View Device Log

Click “*View Device Log*” to enter the interface.

Choose the type of system logs; enter start time and enter time to search the log information of the device.

#### ➤ View Disk Information

Click “*View Disk Information*” to check the detail information of disk listed.

#### ➤ Change Network Configuration

Click “*Change Network Configuration*” to enter the interface. You can change HTTP port, Server port; network address, etc.

**Note:** Changing the port and IP address, the network will disconnect. You will need to change the port and IP address of the device connecting the Transcendent Mac VMS.

#### ➤ Alarm Input Trigger and Schedule Configuration

Click “*Alarm Input Trigger and Schedule Configuration*” to enter the interface. Select a sensor corresponding to the alarm input; choose a type and holding time for it. You also can set trigger alarm or other configurations. Please refer to the picture on the right.

#### ➤ Device Alarm Output Configuration

Click “*Alarm Output Configuration*” to enter the interface. Select an alarm output and holding time; then edit a name for it. You can enable buzzer alarm and set a time for it.

#### ➤ Abnormal Alarm Configuration

Click “*Abnormal Alarm Configuration*” to enter the interface.

Choose the alarm type. Enable “Buzzer Alarm” and select alarm out.

#### ➤ User Information Management

Click “*User Information Management*” shortcut to enter the interface. You can check the information of user

who are logging into the device.

➤ **Email Configuration**

Click “Email Configuration” to enter the interface. You can configure the basic parameters of Email.

➤ **DDNS Configuration**

Click “DDNS Configuration” to enter. You can configure the basic parameters of DDNS.

### 3.3 Area and Camera Management

In the control panel, click “**Change Camera Settings**” under Device to enter the interface. You can modify or delete the area and manage the cameras. Select a camera you want to setup as shown in the below figure.

**Different devices have different functions. Not all devices have the above-mentioned camera settings. Please set up the camera parameters according to the features of your devices.**


#### 3.3.1 Area Management


Click  button to create area.

Select an area and click  button to change its name.

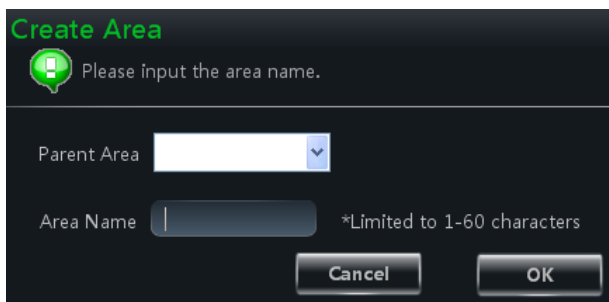
Select an area and click  button to delete it.

Select an area and click  to pop up a window.

① Check the camera on the left column and click  button to add the camera to the area.

② Check the camera on the right column and click  button to remove the camera from the area.

Select a camera and click  button to modify the area of this camera.



### 3.3.2 Camera Management

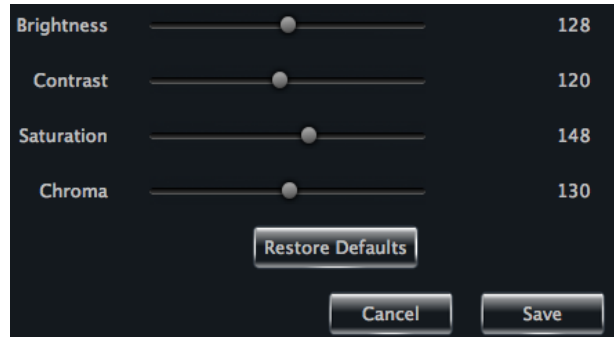
A real-time image will be displayed after selecting a camera. You can setup the parameters of this camera.

#### ➤ Image Settings

Image settings include “Image video parameter”, “Image quality” and “Image display”.

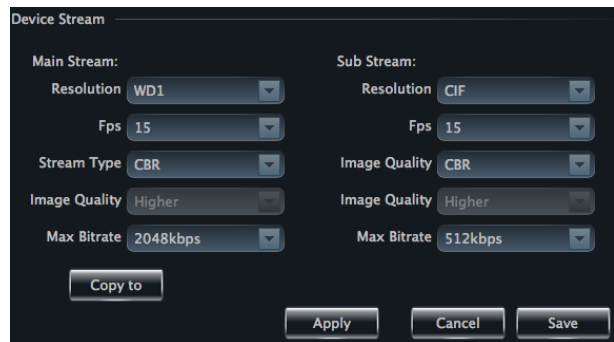
Click “*Image video parameters*” to enter the interface.

- ① Adjust the brightness, contrast, saturation and chroma of the image.
- ② Clicking **【Restore Default】** button will restore the above parameters to factory default settings.



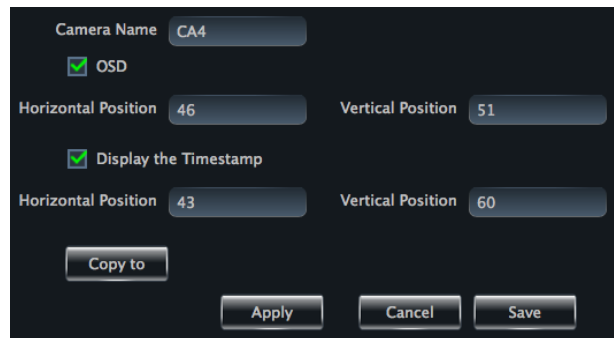
Click “*Image Quality*” under Image Settings to enter the interface.

Choose the device stream, resolution, quality, etc. according to the application.



Click “*Image Display*” to enter the interface.

- ① Create the camera’s name and set up its display position on the OSD including the time stamp.
- ② Click **【Copy to】** button to apply the settings to the selected channel.



#### ➤ Record Settings

Click “*Record Settings*” to enter the interface as shown on the right.



Under the record of device

- ① Enable schedule Record.
- ② Set schedule.
- ③ Choose pre-recording time, duration and record save time.
- ④ Click **【Copy to】** button to save the settings to the selected channel.



The picture of setting schedule record of system:

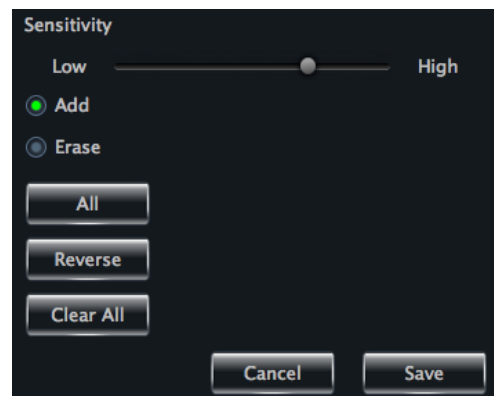


- Click  icon and move the cursor to select the time.
- Click  icon to delete the selected time.
- Clicking “Manually” to manually input time
- Click “All” / “reverse” to quickly select the time.
- Click “Empty” to clear all the time.

➤ **Motion Detection Alarm Settings**

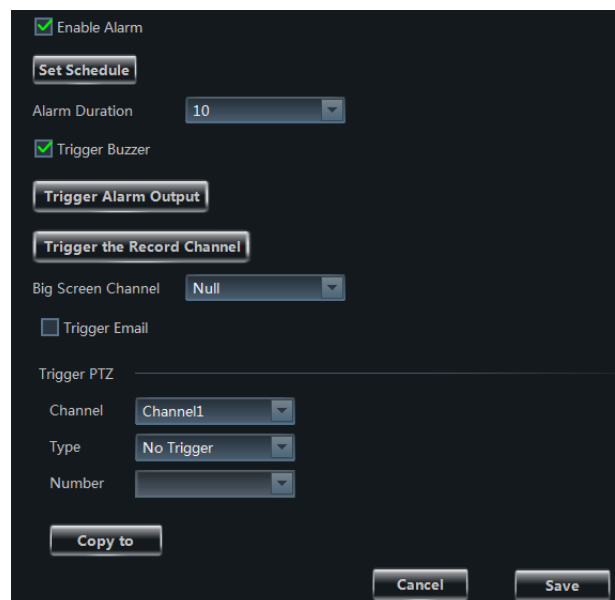
Click “*Area and Sensitivity*” under Motion Detection Alarm Setting to enter the interface.

- ① Drag slide bar to set the sensitivity value. The higher the value is, the more sensitive it is.
- ② Click “Erase”/ “Add”, then hold press “Ctrl” and left click mouse to delete /add the area you want.
- ③ Click **【All】** / **【Reverse】** / **【Clear All】** button to select area or clear all the area quickly.



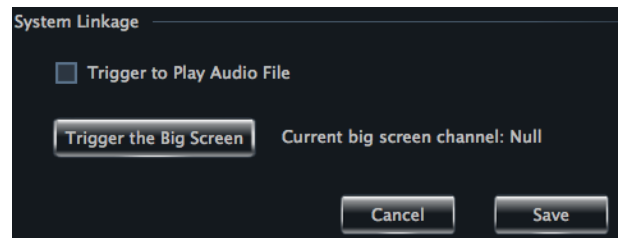
Click “*Set Motion Alarm*” under Motion Detection Alarm Setting to enter the interface.

**Note:** Please refer to the user manual of the device for device linkage configuration.



Click **“System Trigger”** under Motion Detection Alarm Setting to enter the interface.

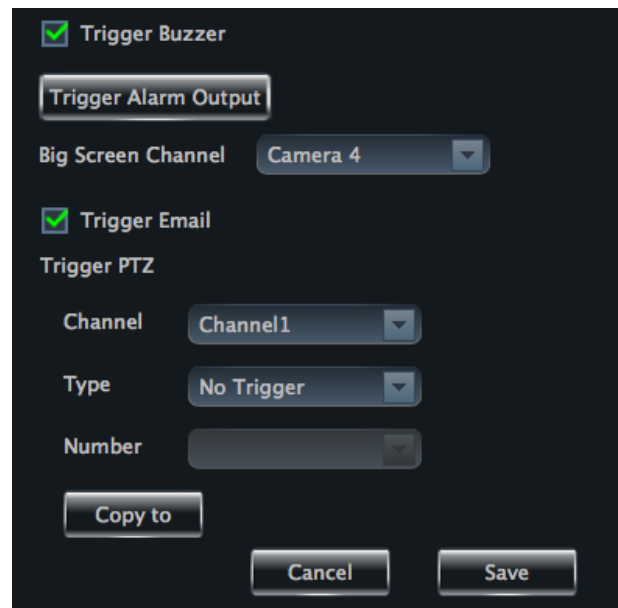
Under the system linkage, check “Trigger to Play Audio File”. If the motion alarm of a certain channel is triggered, there will be a sound like “beep”.



Click **【Trigger the Big Screen】** button to select channel. If the motion alarm of the selected channel is triggered, the selected camera will pop up full screen.

➤ **Video Loss Alarm Settings**

Click **“Video Loss”** to enter the interface. The steps of configuring video loss are same with the device settings; please refer to the video loss chapter of device user manual.



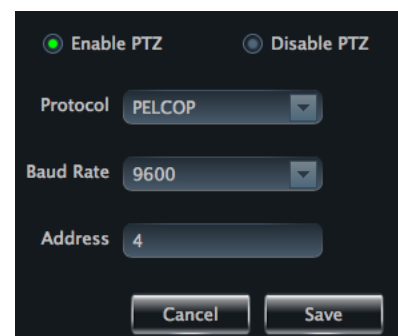
➤ **Video Loss of System**

Click **“Video Loss of System”** to set. You can check “Trigger to Play Audio File” . If the video loss alarm of a certain channel is triggered, there will be a sound like “beep”.

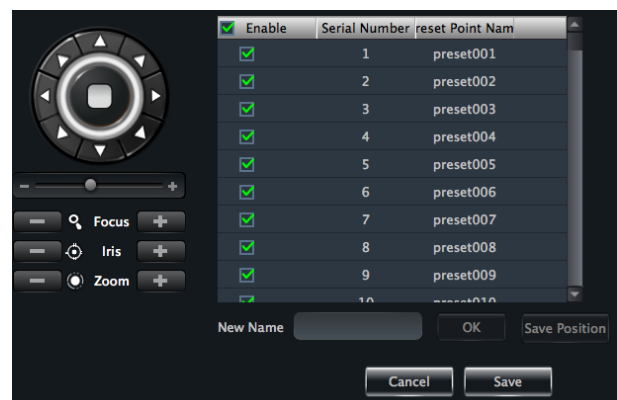
Click **【Trigger the Big Screen】** button to select channel. If the video loss alarm of the selected channel is triggered, the selected camera will pop up full screen.

➤ **PTZ Settings**













Click **“PTZ Protocol Configuration”** under PTZ Settings to enter the interface. You can enable or disable PTZ. From the Protocol and Baud Rate drop-down menu, choose a protocol and a baud rate to associate with the PTZ, and then input the address of the PTZ connecting the software.



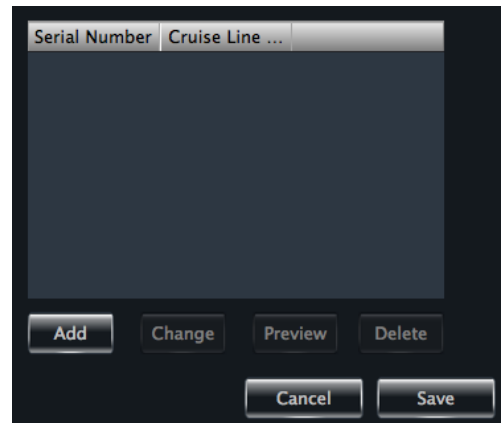
Click **“Preset Point Configuration”** under PTZ Settings to enter the interface. Enable corresponding preset points and create a new name in the “New Name” field by selecting the preset point. Adjust the dome direction, speed, etc by clicking the buttons. Click **【Save Position】** to save the current position of the dome.



The definitions of the buttons are below:

Buttons	Description
	 Directional arrows for dome movement
	Drag the slider bar to adjust rotation speed of the dome
	Focus button. Click  button to obtain long focus. Click  button to obtain short focus
	Iris button. Click  button to open iris. Click  button to close iris.
	Zoom button. Click  button to zoom in. click  button to zoom out


Return to Area and Camera Management interface, and then click **“Cruise Line Configuration”** PTZ Settings. You can add/change/preview/delete curies.



In the Area and Camera Management interface, click “PTZ Track Settings” to see the picture on the right hand. You can set the PTZ track.



➤ **Remove camera**

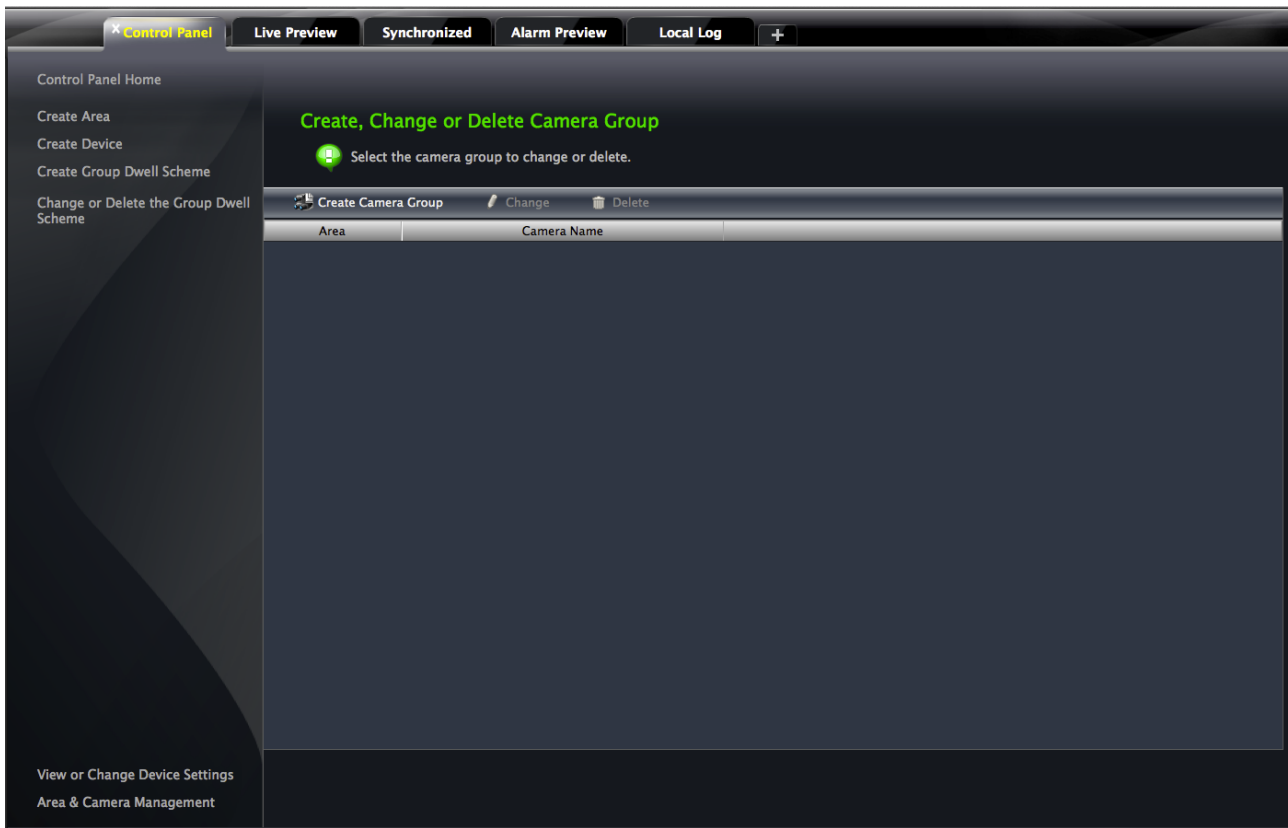
In the Area and Camera Management interface, select a camera, click  button to pop up a



dialog window, click **【OK】** button to remove the camera.

## 4 Group and Scheme Setting

In the interface of control panel, click **“Group and Scheme Setting”** to enter the interface. Please refer to the below picture:

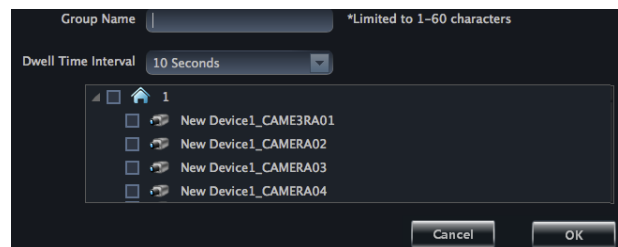


### 4.1 Create, Change or Delete the Camera Group

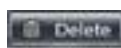
In the above interface, click



button to create a group.



Select a group in the group list, click

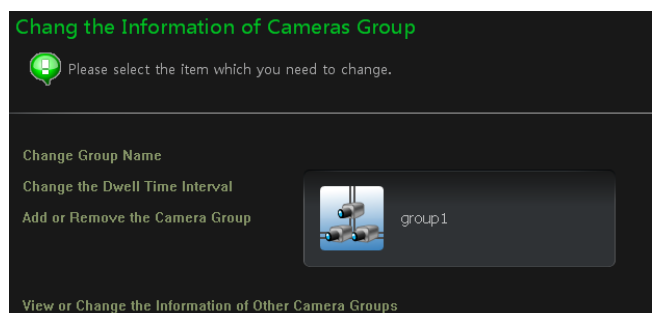


button to delete it.




Select a group and click



button to enter the interface as shown on the right. You can change the group name and dwell time interval in this interface.



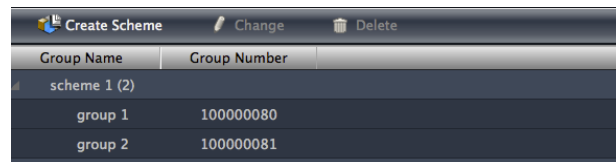
## 4.2 Add or Remove the Camera Group

- ① Select a group and click  button to enter the interface. Then click **“Add or Remove the Camera Group”** to pop up the window as shown on the right.
- ② Check cameras on the left and click  button to add the selected cameras to the group on the right.
- ③ Check cameras on the right, then click  button to remove them from the group.



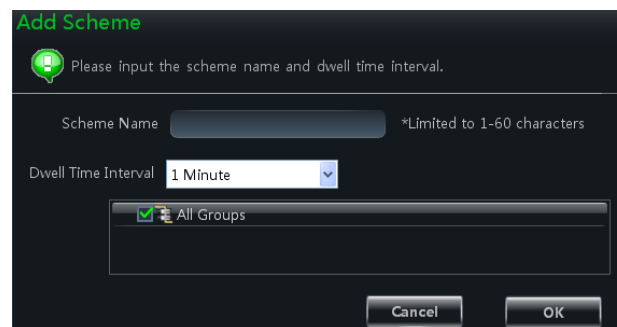
## 4.3 Create, Change or Delete Group Dwell Scheme

Scheme is used for dwelling group by group. Therefore, at least one group should be created. Click **“Change or Delete the Group Dwell Scheme”** on the left side of the menu to enter the interface as below.

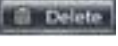



### 4.3.1 Create Scheme

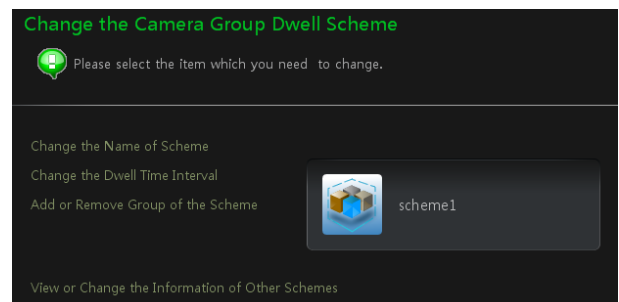
Click  button to create a scheme. The added scheme will be displayed in the scheme list.




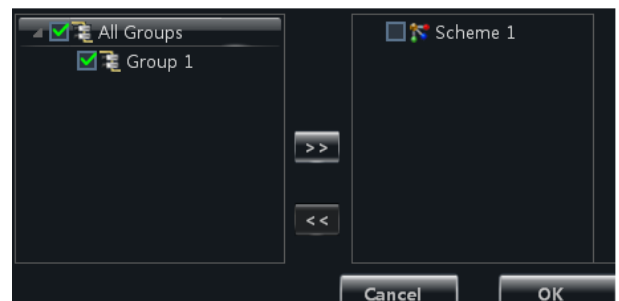
### 4.3.2 Change and Delete Group Dwell Scheme



Select a scheme in the scheme list, click  button to delete it.

Select a scheme and click  button to enter the interface. You can change the name of scheme and the dwell time interval.



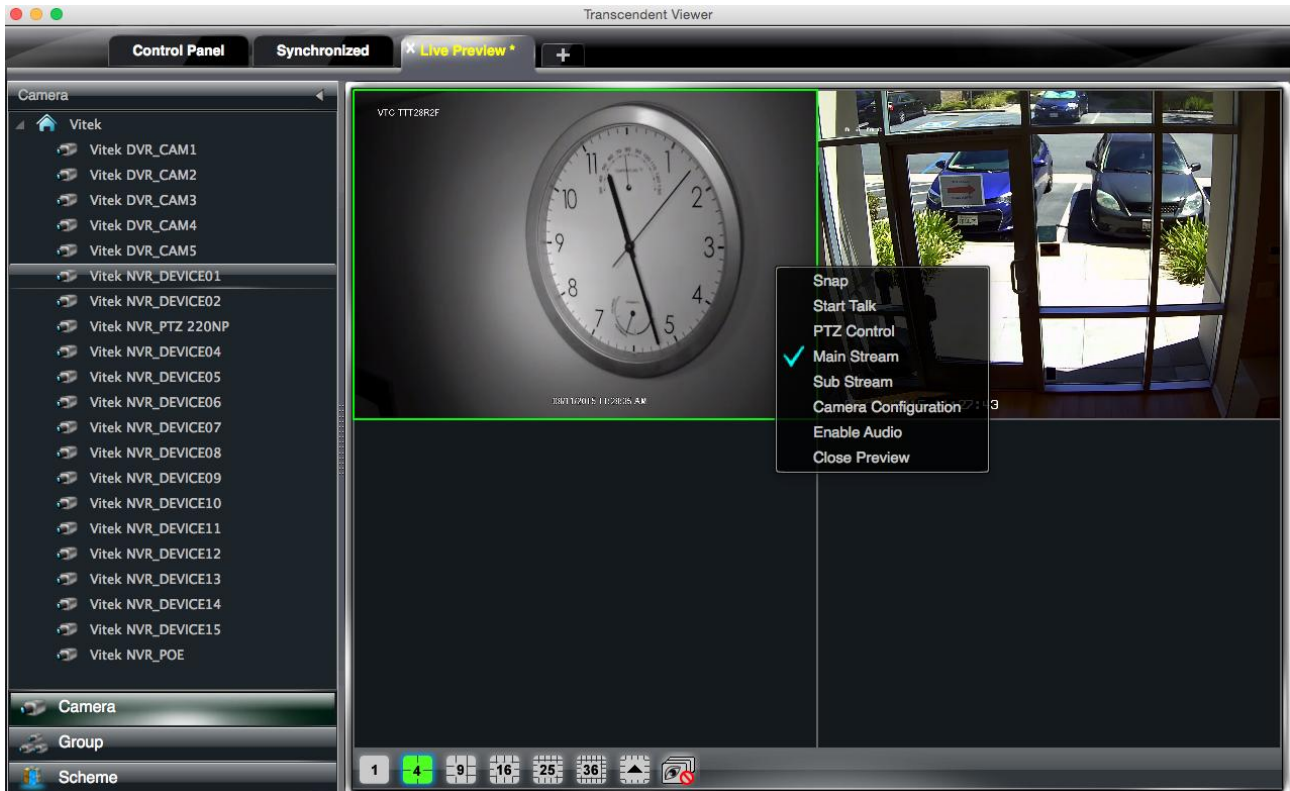
Select a scheme and click  button. Then click **“Add or Remove Group of the Scheme”** to enter the interface.



- Check group on the left and click  button to add the selected group to the scheme on the right.
- Check group under scheme on the right and click  button to remove the group.

## 5 Live Preview









In the interface of control panel, click “Live Preview” to enter the interface:



Buttons description of live preview:



Toolbar on the display window:

Icon	Description	Icon	Description
	Close image		Snap
	Start/stop talk		PTZ control. Clicking the icon will display the control panel of PTZ.
	Open/close audio		Camera configuration
	Fit to window		Zoom in

Right button functions:

Menu	Description	Menu	Description
<b>Snap</b>	Snap picture	<b>Camera</b>	Enter the interface of the area and

		Configuration	Camera configuration
<b>Start talk</b>	Start or stop talk	<b>PTZ Control</b>	To display the control panel of PTZ
<b>Stream</b>	Choose stream to view.	<b>Close Preview</b>	Close single channel preview
<b>Enable Audio</b>	Enable or close audio		

## 5.1 Preview


### 5.1.1 Monitor Point Preview

To start the live preview, drag the cameras from the list to the right display window or select a window and double-click the camera to display the live image.

You can drag the image to any window at random.

### 5.1.2 Stop Preview


#### ➤ Close Preview of Channel

Place your mouse on the window to display the menu toolbar, then click  icon to close preview of this channel.


#### ➤ Close Preview by Right-clicking

Choose “*Close Preview*” by right-clicking the display window to close preview of this channel.

#### ➤ Close All Preview



Click  icon on the main menu toolbar to close all the windows.

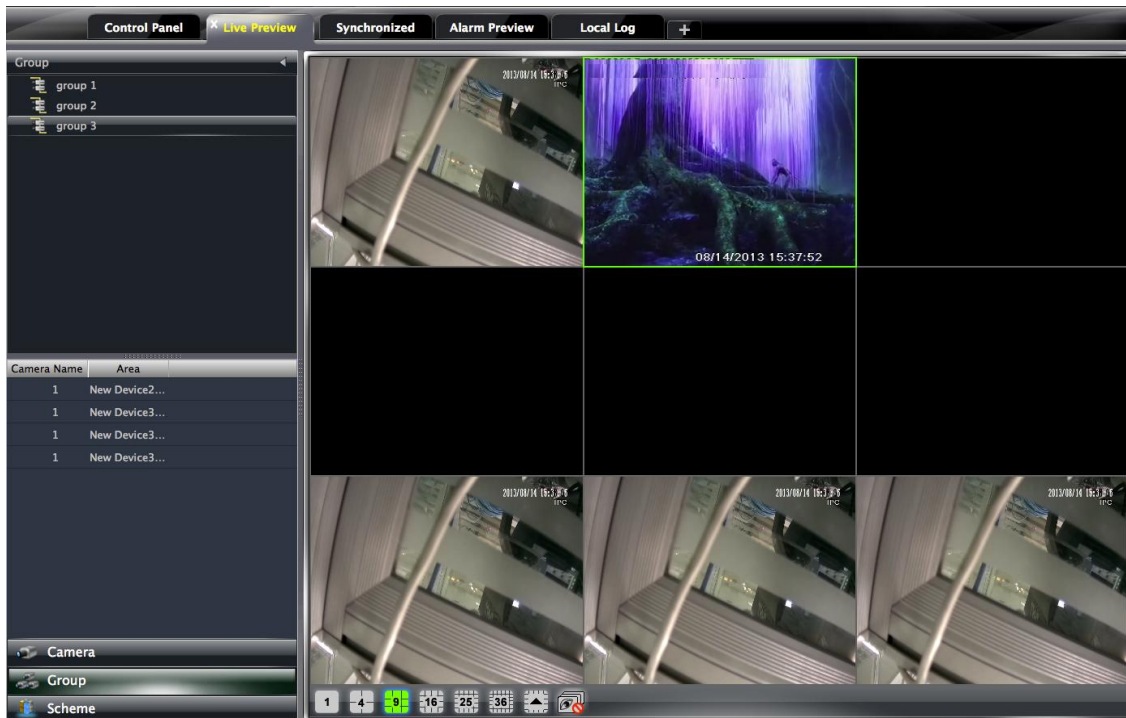
## 5.2 Dwell Preview

After setting up group or scheme (Please refer to chapter 4 for creating group), enter to the live preview interface and click  button to display the group list or scheme list. The below sections will introduce how to realize group dwell and scheme dwell.


### 5.2.1 Group Dwell Preview

#### ➤ Start Group Dwell

In the interface of live preview, click  shortcut on the left side to display the groups. Drag a group under scheme to any window ( icon stands for group). The cameras of this group will play one by one on this window at the set time.





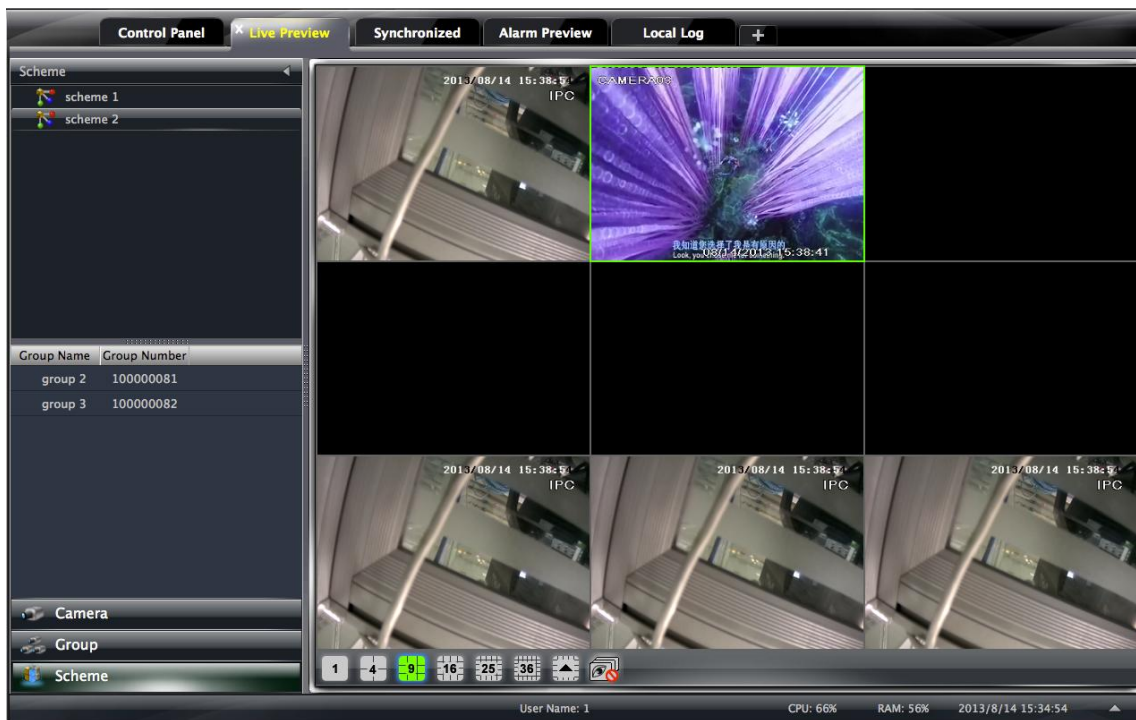
➤ **Stop Group Dwell**

Right click the display window to select “Close Preview” to close preview of this channel or click  icon on the main menu bar to close all windows for stopping dwell.

**5.2.2 Scheme Dwell Preview**


➤ **Start Scheme Dwell**

In the interface of live preview, click  shortcut on the left side and then drag a scheme to the right window to dwell ( icon stands for scheme).The screen mode will be distributed automatically according to the number of camera under the group



**Note :** To achieve dwell between devices, the device should be as a unit when adding groups. Then add all the groups into one scheme to dwell.

➤ **Stop Scheme Dwell**

Click  icon to close all the windows for stopping scheme dwell.


### 5.3 Preview Control

➤ **Single Channel in Full Screen**


Double click the selected window to view in full screen. Double click again to recover the window.

➤ **Stream of Live Preview**

Right click on the display window to choose recording stream. The above stream is main stream (e.g.: D1 30fps) and the below is sub stream (e.g.: CIF 6fps).

Modify Device Stream: Click  button on the display window to enter the Area and Camera Management interface. Click **“Image Quality”** under Image Setting to modify device stream. Please refer to chapter 3.3.2 Image Settings for details.

➤ **Audio**



Right click on the displaying window to choose “Enable Audio” or click  icon to enable audio of this channel.

**Note:** Only one audio can be enabled at the same time. If enabling another channel’s audio, the enabled audio will be closed automatically.

➤ **Zoom In**






Click  icon on the toolbar in the displaying window to zoom in the image; click  icon to recover the image.



## 5.4 Snap

### 5.4.1 Snap

Click  button on the toolbar of the selected channel or right click to choose “**Snap**” to capture the pictures.

After snapping pictures, a message prompt box will pop up to remind you the pictures are captured successfully and where the pictures are stored.

**Note:** Capturing pictures only in live preview or playback.




### 5.4.2 Snap Number

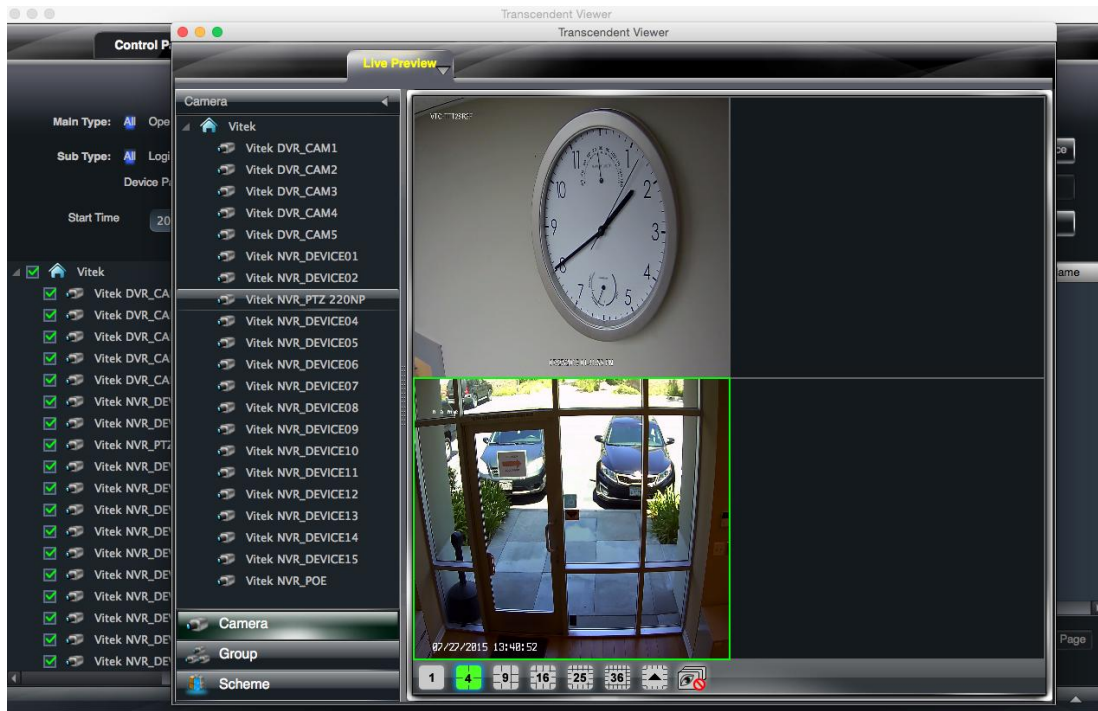
In the interface of control panel, click “**Set Snap Default Number**” under **Basic** to configure the number you want to capture every time.


### 5.4.3 Snap Path

In the control panel, click “**Basic**” to enter the interface. Click on “**Path of snap file**” and select folder to save captured images.

## 5.5 Multi-screen to Preview

In the interface of live preview, click  button to add a tab of live preview. Drag any tab of live preview to pop up an independent live preview interface as below. Multi-screen to display can be done by dragging the independent interface to other screen (graphics card should support multi-screen output).



Clicking the  button of the live preview interface to choose “Tab View” can embed this tab in main interface.




**Note** : 1. 20 live preview tabs can be added.

2. Live preview interface can be displayed on multiple screens.



## 5.6 Talk and Broadcast

### 5.6.1 Talk

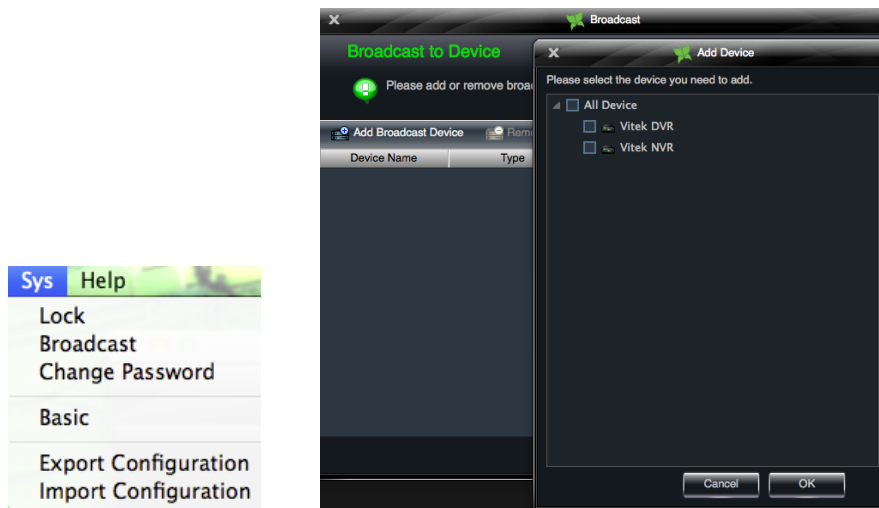
Click  button on display window or right click to pop up a menu bar. Choose “Start Talk” to enable bidirectional audio.

**Note**: Since Transcendent Mac VMS only allows opening one device’s talk at the same time, the system will stop audio with the current device for enabling new audio with another device which is launching audio.

### 5.6.2 Broadcast


- ① Click “**System**” on the menu bar of software at the upper right; choose “**Broadcast**” to enter the interface.
- ② Click  button to pop up a window; then check the devices you want to broadcast, click **【OK】** button to save the setting.
- ③ Click  button to stop broadcast.






## 5.7 PTZ Control






### 5.7.1 Parameter Configuration of PTZ

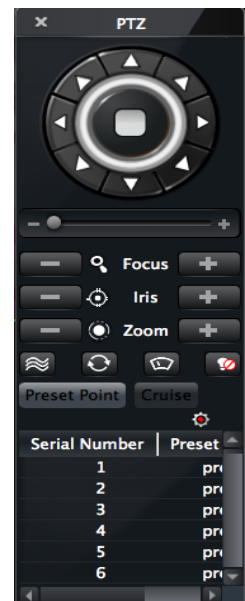
Please confirm the parameter of PTZ has been configured correctly before operating PTZ. Click  icon in display window or “*Change Camera Setting*” under “*Device*” to enter the interface. Click “*PTZ Setting*” to enable PTZ and setup protocol, baud rate and address of PTZ.

**Note:** Here the protocol, baud rate and address of PTZ must be consistent with the PTZ decoder.

### 5.7.2 PTZ control

Return to the live preview interface after configuring parameter of PTZ; select the channel and click  icon or right click to choose “*PTZ Control*” to open the control panel of PTZ.

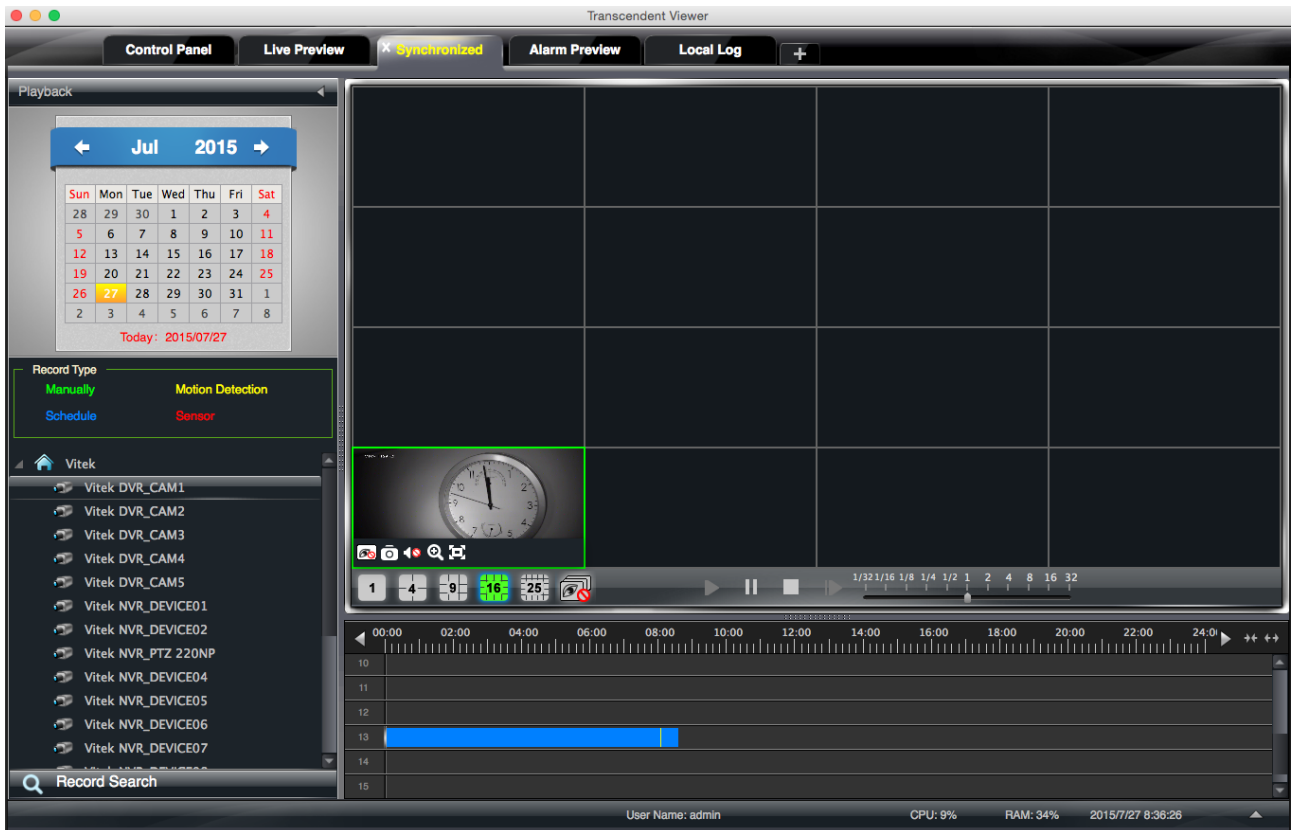
- Click the direction buttons to control its rotational direction; drag the slider to control its speed.
- Click  and  buttons to adjust focus, iris and zoom.
- Select a preset point and click  to operate this preset point or double click the preset point to operate it.
- Click **【Cruise】** button to display list of cruises. Select a cruise and click  button to cruise; click  button to stop cruising.



PTZ can also support track, auto scan, wiper and light function.

## 6 Playback Management

In the interface of control panel, click “Playback” to enter the interface. You can play back the recorded files saved in the HDD of the device. You can play the recordings of multiple channels. Additionally, all those recordings are played at the same time point automatically.



### Buttons Description of Area 2

Icon	Description
	Screen mode. 1,4,9,16,25 channels are optional
	Close playback of all channels
	Play
	Pause
	Stop
	Playback by single frame. When playback, click  button and then click this button to play frame by frame.
	Playback speed bar



### Toolbar on Playback Window:

Icon	Description	Icon	Description
	Close playback		Snap



	Open/close audio		Zoom in
	Fit to window		

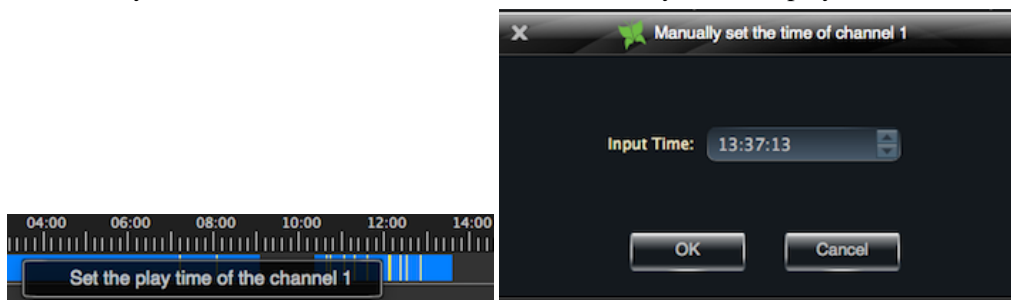
**Right button functions:**



Menu	Description	Menu	Description
<b>Snap</b>	Snap picture	<b>Enable Audio</b>	Enable or close audio
<b>Close Channel</b>	Close single channel preview		

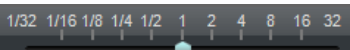
In the playback interface, select the screen, date and channel and then click  button to search the recorded files. After the recorded files are searched, click  button to playback. In the timeline, green bar stands for manual record data; yellow bar stands for motion record data; blue bar stands for schedule record data; red bar stands for sensor record data.

**6.1.1 Playback by Setting Time**


Right click the color bar to select “*Set the Play Time of the Channel X*”, and then a dialog window pops up. Input time manually or click   button to select time. The system will play the video from the time you set.



**Note:**  and  buttons on the timeline are used to expand and narrow down the time bar, so you can choose a more accurate playback time.

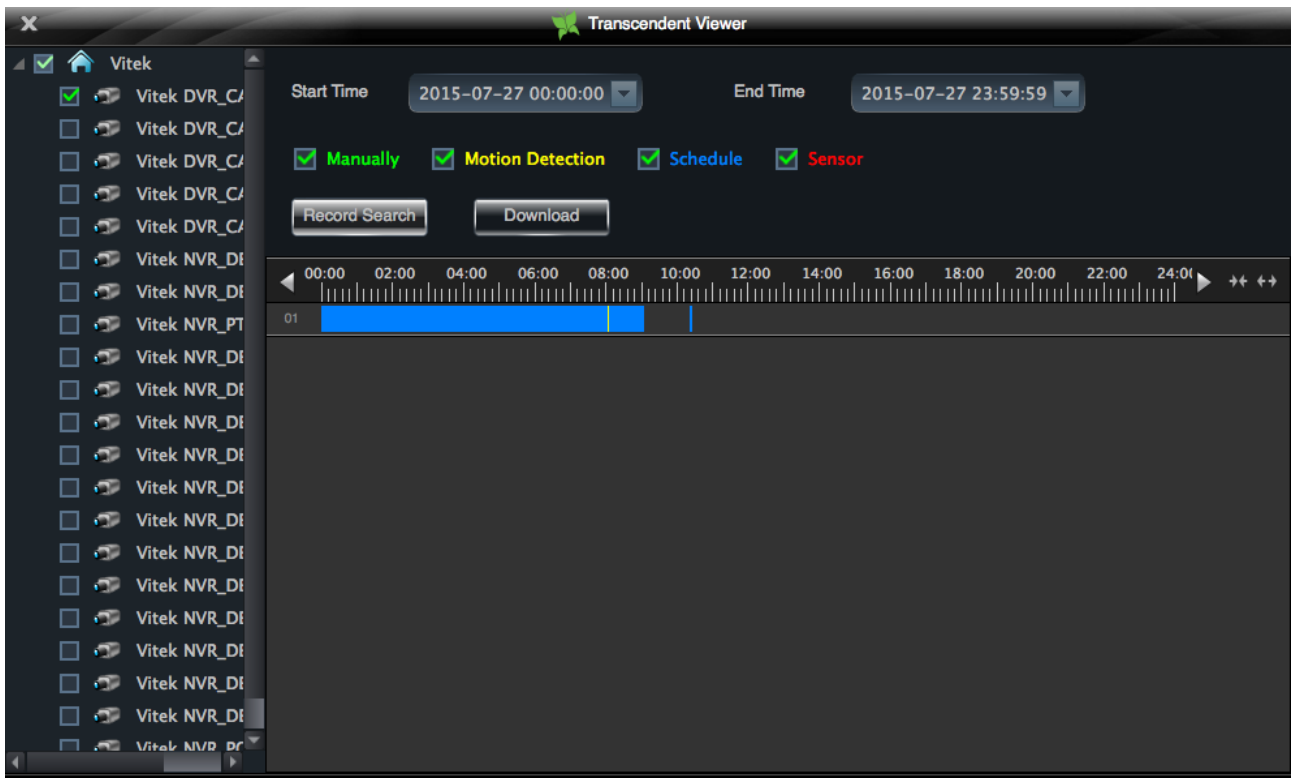
What’s more, you may also change playback speed by dragging  bar.

**6.2 Snap When Playback**

Click  button on the playing window to capture pictures. A message prompt will pop up after snapping.

**6.3 Download Record**

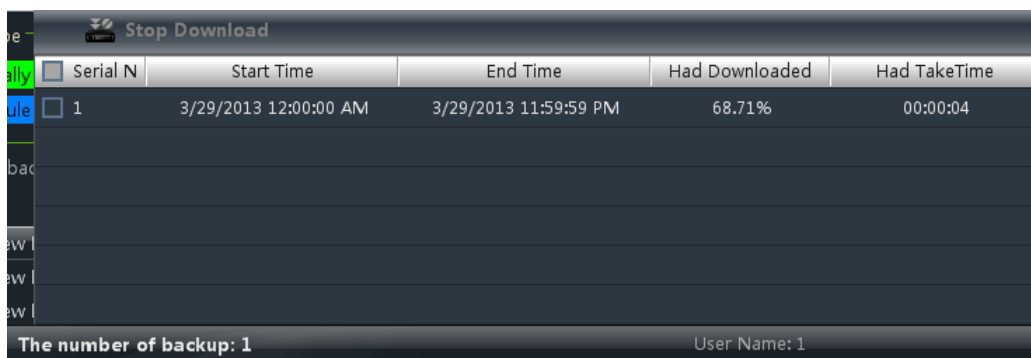
Click “Backup Record” in the control panel interface. This will bring up a window as shown below:



Select record channel, start time and end time, checkmark event type and then click **【Record Search】** button to search record information. After the information is searched, a backup information window will pop up by clicking **【Download】** button. Click **【Browse】** button to choose save path. Then click **【OK】** button to download record.

## 6.4 View the Progress of Downloading

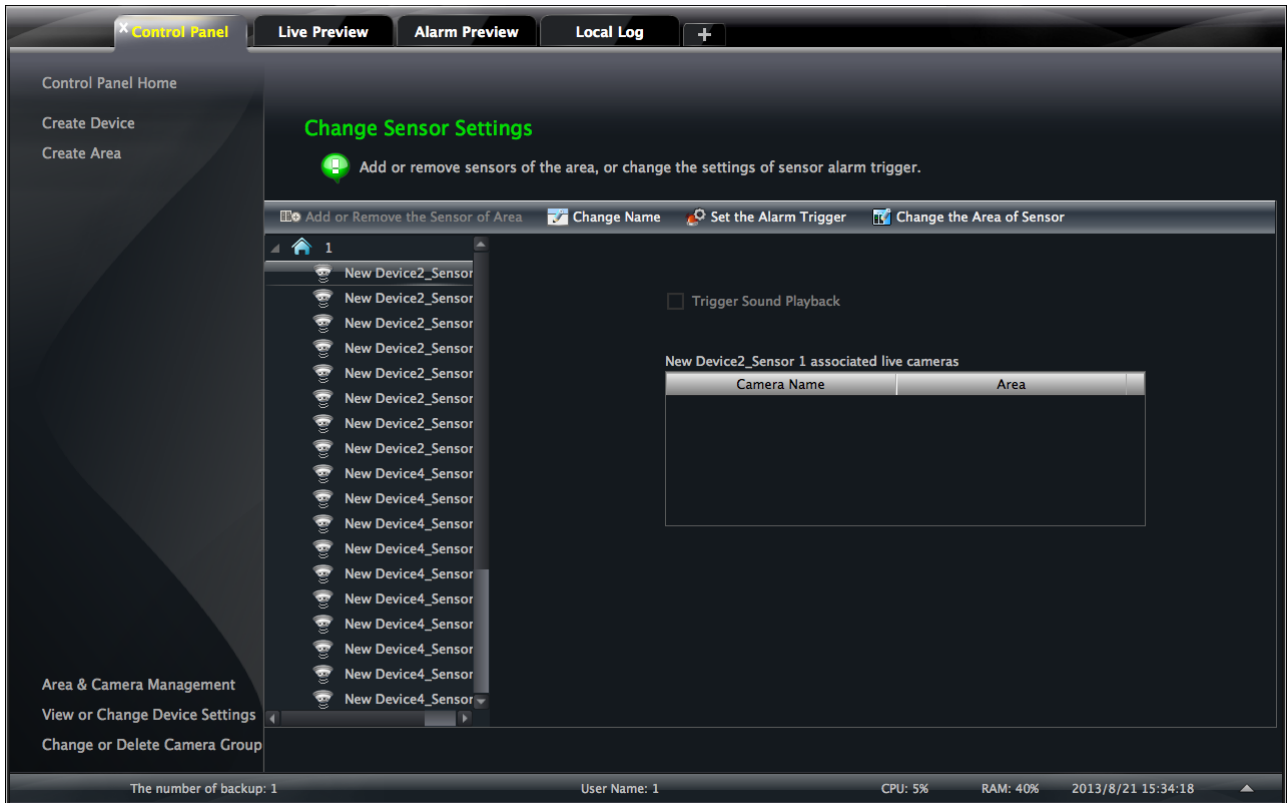
When starting download, you can view the progress of downloading and stop downloading manually by putting the cursor on the lower right corner (under  button).



# 7 Alarm Management



## 7.1 Sensor Alarm

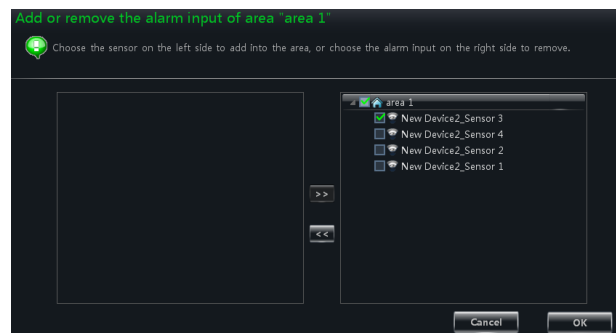
In the control panel, click “Alarm Management” to enter the interface.



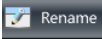
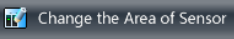
### ➤ Add or Remove Sensor of the Area

In the interface of Alarm Management, choose an area, click  button to enter the interface.

- ① Check the sensor under the area on the right and click  button to move out the sensor.
- ② Check the sensor on the left and click  button to add sensor.



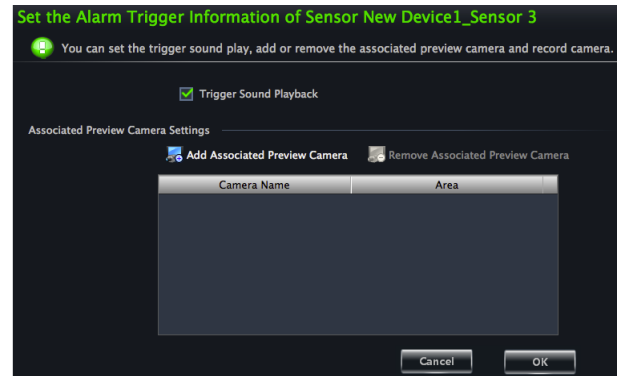
### ➤ Rename or Change Area

In the interface of Alarm Management, choose a sensor and click  button to change its name; click  button to change the area of sensor.


### ➤ Alarm Trigger Setup

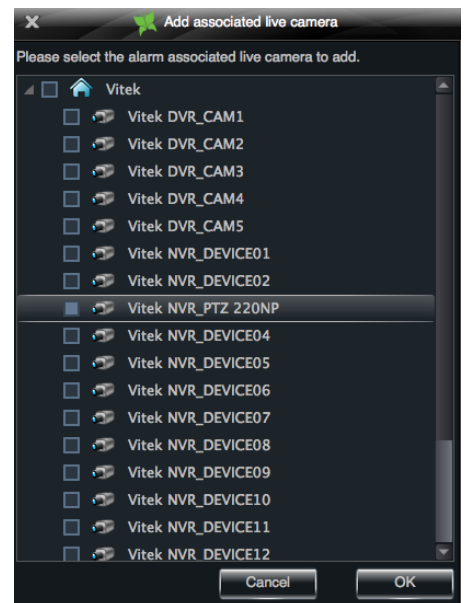
In the interface of Alarm Management, choose a sensor and click “Set Alarm Trigger” button to enter the interface.

If checking “*Trigger Alarm Playback*”, there will be a sound like “beep” on an alarm.



#### ◆ Add Associated Preview Camera

Click  to pop up a window; check cameras and click **【OK】** button to save the setting. When sensor alarm is triggered, the alarm preview and e-map preview will popup automatically. Select the added camera, click “Remove Associated Preview Camera” to remove the camera.



## 7.2 Motion Detection Alarm

In the control panel, click “*Change Camera Settings*” under Device.

- Select a camera and click “*Area and Sensitivity*” to enter the interface as right. You can adjust the detection sensitivity and setup the motion area.
- Click “*Set the Motion Alarm*” to enter the interface. Enable motion detection alarm and set the alarm trigger. Please refer to section 3.3.2 for details.

## 7.3 Video Loss Alarm

In the control panel, click “*Area & Camera Management*” under Device.

Click “*Video Loss*” to enter the interface. The steps of configuring video loss are same with the device settings please refer to the video loss chapter of device user manual.

Choose a camera and click “*Video Loss of System*” to enter the interface. Please refer to section 3.3.2 for details.

## 7.4 Alarm Preview

The interface of alarm preview will automatically pop up if the relevant alarm page and alarm preview have been already configured.

### 7.4.1 Alarm Preview Configuration

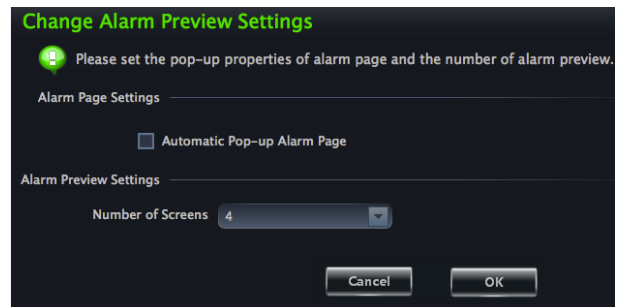
■ **Motion Detection Alarm:** In the control panel, click “*Change Camera Settings*” under *Device* to enter the interface. Select a camera, and then click “*System trigger*” shortcut under Motion Detection Alarm Settings to pop up a window; click **【Trigger the Big Screen】** button under system linkage to select channel.

■ **Video Loss Alarm:** Click “*Video Loss of System*” to enter the interface; click **【Trigger the Big Screen】** button under System Linkage to select channel.

■ **Sensor Alarm:** In the control panel, click “*Alarm Management*” to enter the interface. Click “Set the Alarm Trigger” button to add the associated preview cameras.

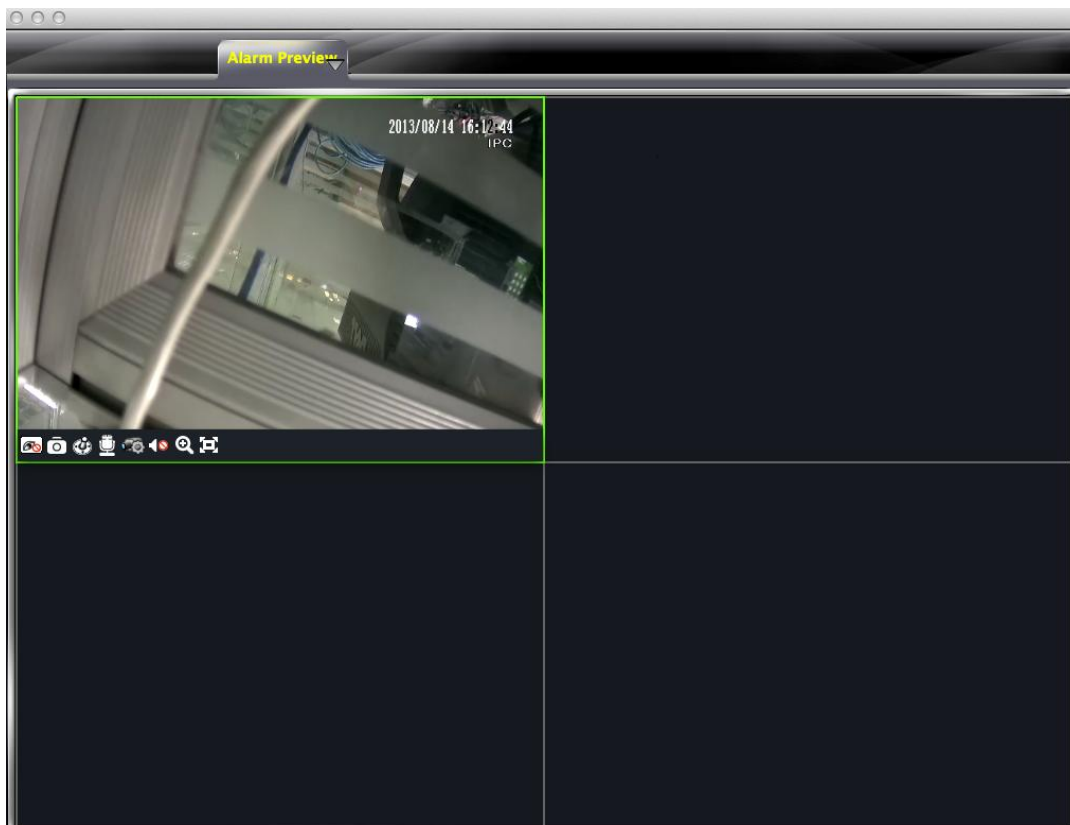
In the control panel, click “*Change Alarm Preview Settings*” under Live Preview to pop up the window

- ① Alarm preview will pop up automatically on an alarm if checking “Automatic Pop-up Alarm Page”.
- ② Choose the number of screen.



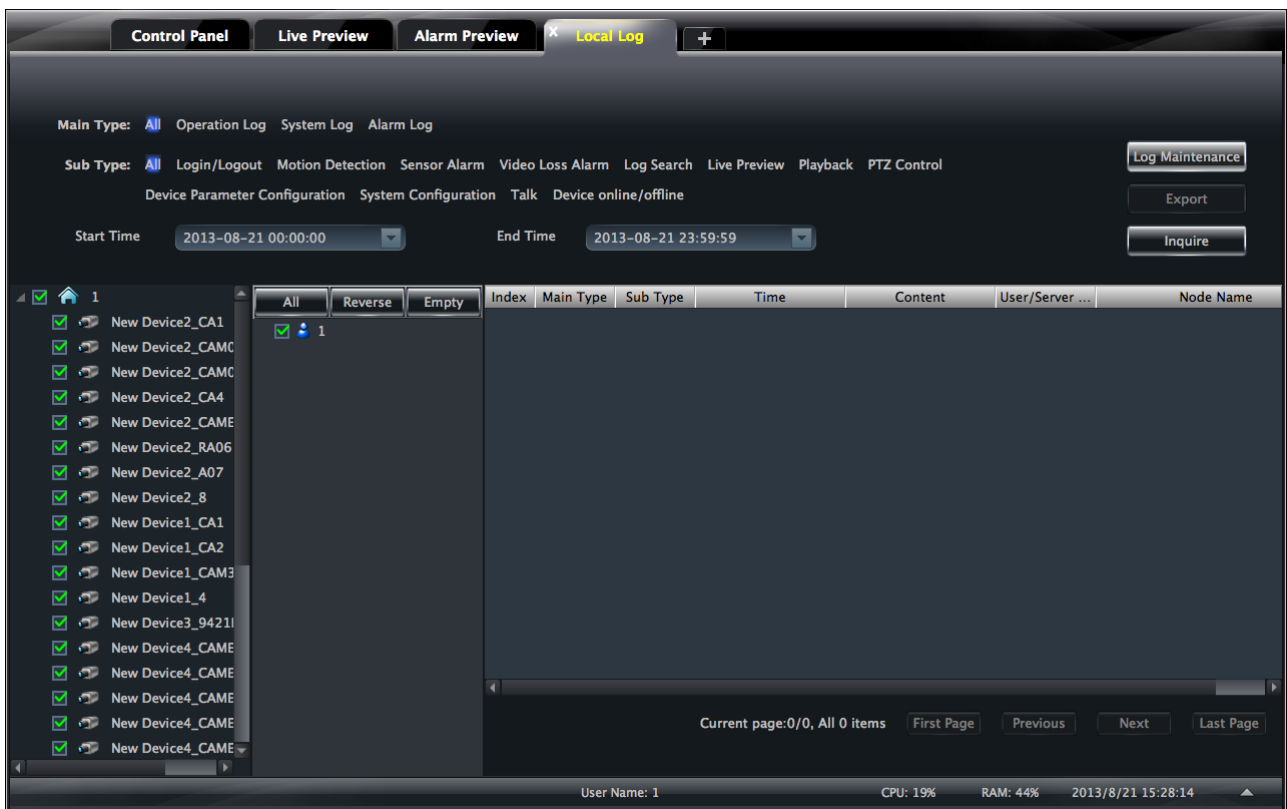
### 7.4.2 Alarm Preview

After configuring the alarm, the alarm preview will automatically pop up if the alarm of selected channels is triggered. The default pop-up window of system is independent interface.



# 8 Local Log

In the interface of control panel, click “Local Log” to enter the interface.

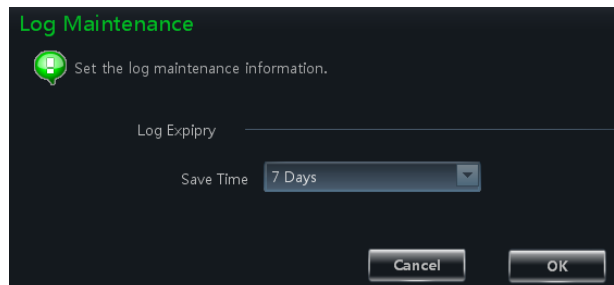


## 8.1 Search log

Choose main type, sub type, set the start time and end time and then click **【Inquire】** button to search the relevant log information. click **【First page】** **【Previous】** **【Next】** **【Last page】** to view the information on different pages.

## 8.2 Log Maintenance

In the log interface, click **Log Maintenance** button to pop up a dialog window. You can save the information of log for a certain time period in this interface.



## 8.3 Export

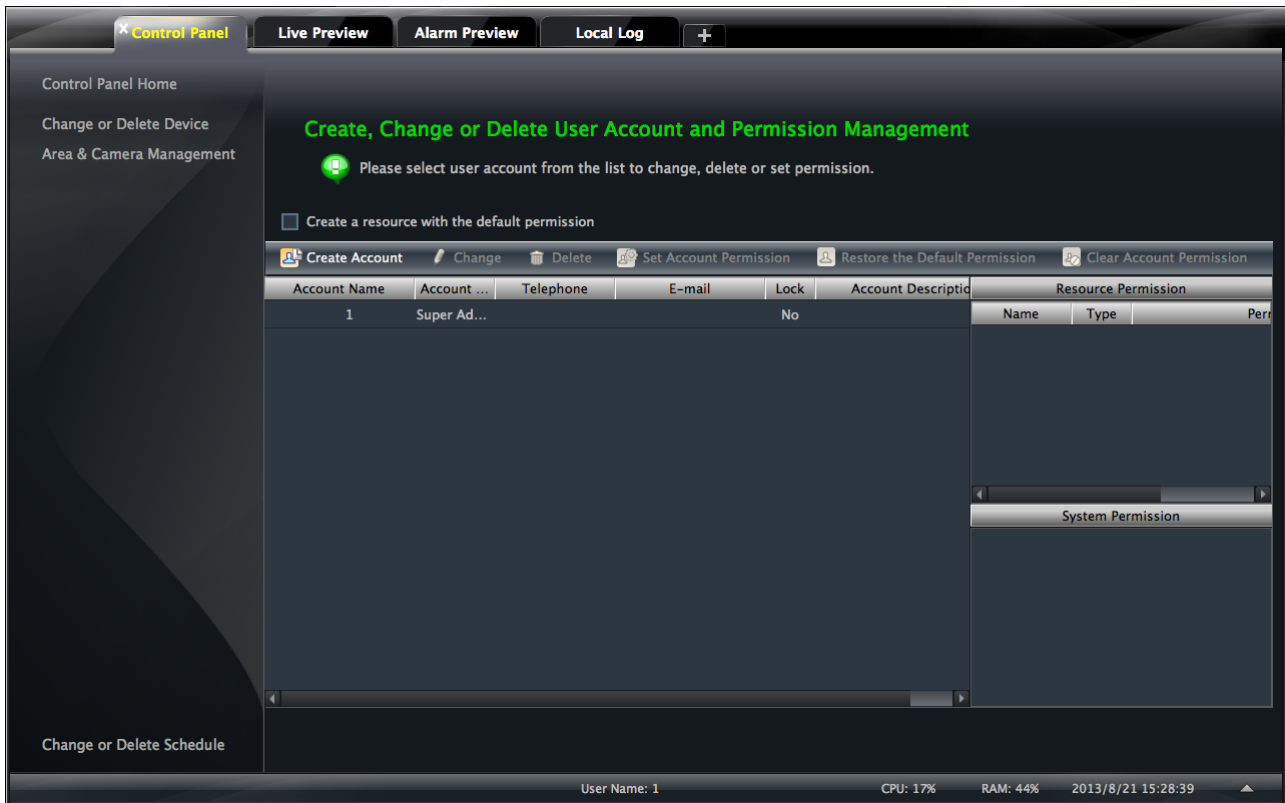
In the log interface, click **Export** button and then choose a storage path to export the log information.



## 9 User Management

In the interface of control panel, click “User Management” to enter the interface.

There is only one super user registered by you when logging in the system for the first time. You can add several users and set rights for them through the function of “Set Account Right”.




### 9.1 Create a Resource with the Default Permission

In the above interface, clicking “*Create a Resource with the Default Permission*” means that permission of new resources will be given to all the users if you are going to create new resources.

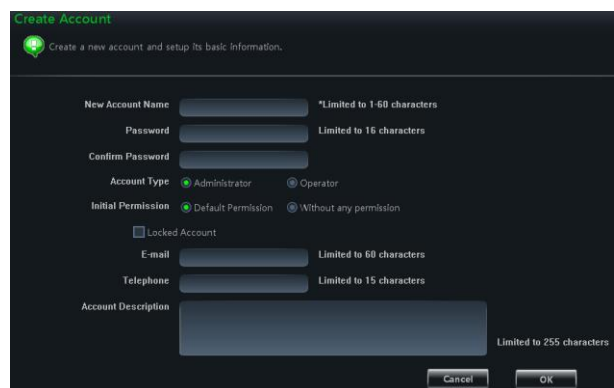
### 9.2 Create, Change and Delete Users

#### ➤ Create Account

In the interface of User Management, click  **Create Account** to pop up a dialog window. Input account name and password. Choose account type and default rights.

You can bind account by e-mail or telephone and add description if you wish.


**Note:** • Two types of user: administrator and operator. Administrator enjoys all the system permissions except account and permission management.




Operator only has the permissions of broadcast, searching and exporting log.

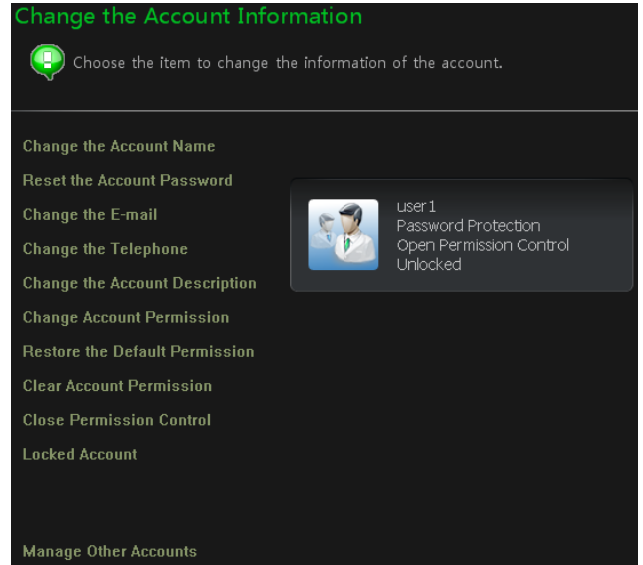
- If you have checked “Default Permission” under initial permission when creating new account, all the resource permissions and system permissions will be added for the user.

➤ **Change Account**


In the interface of User Management, select a user and click  button to enter the interface. You can change account name, password, e-mail address, etc.

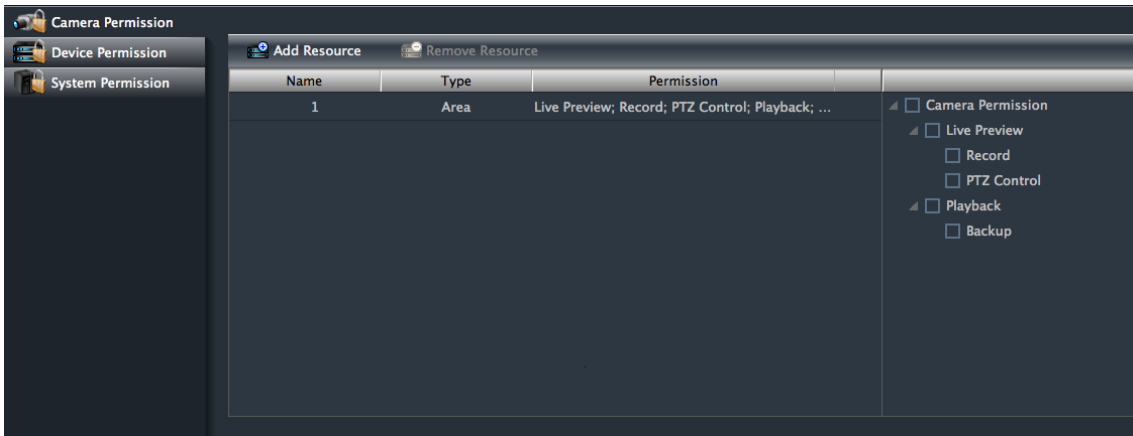
➤ **Delete Account**

In the interface of user management, select a user and click  button to delete it.




### 9.3 Account Right Configuration

In the interface of User Management, select a user and then click  to enter the interface.



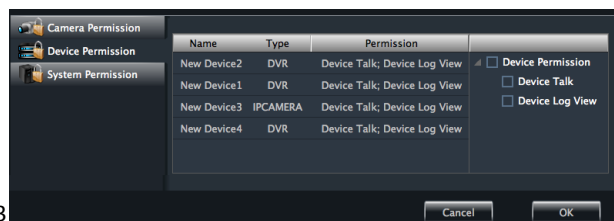
➤ **Camera Permission**

In the interface of Camera Permission, click  button to add resources and check camera permissions on the right. You can add different permissions for different users.



➤ **Device Permission**

Click “*Device Permission*” to enter the interface. Select the right on the right hand you want to enjoy.




➤ **System Permission**

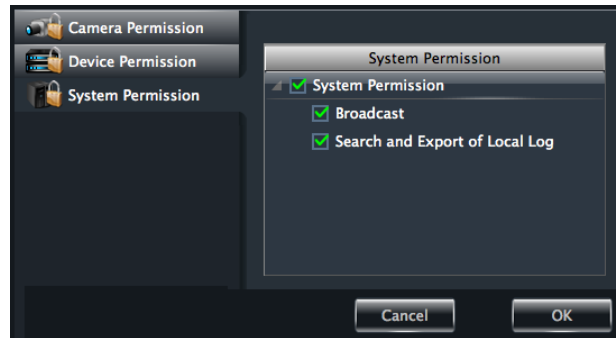
Click “*System Permission*” to enter the interface, you can set the right of broadcast, searching log information and exporting it for the user you selected.

➤ **Restore Default Permission**

In the interface of account right management, select a user and click  to restore default permission of this user.

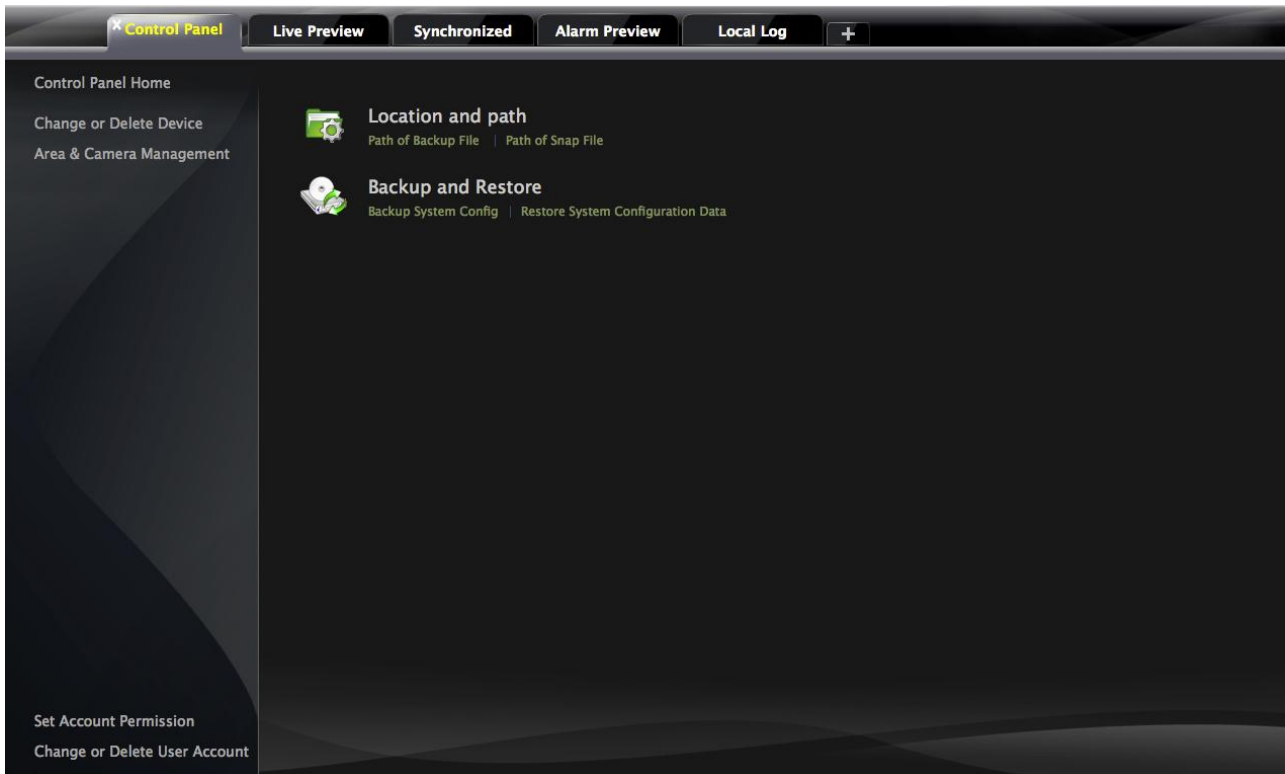
➤ **Clear Permission**

In the interface of account right management, select a user and click  to clear this user’s permission.



# 10 Basic

In the interface of control panel, click “**Basic**” to enter the interface. Here, you can set up the path of backup and snap file, as well as backup and restore.



## 10.1 Location and Path

Path of backup file: Click the shortcut menu in the above interface to set the backup path.

Path of snap file: Click the shortcut menu in the above interface to set the snap path.

## 10.2 Backup and Restore

When upgrading the software to a new version, you should first export the data of the previous version and then import to the new version so that repeated addition and settings could be avoided.

### 10.2.1 Backup System Configuration data

In the interface of Basic Configuration, click “*Backup System Configuration Data*” to export the configuration data.


### 10.2.2 Restore System Configuration Data

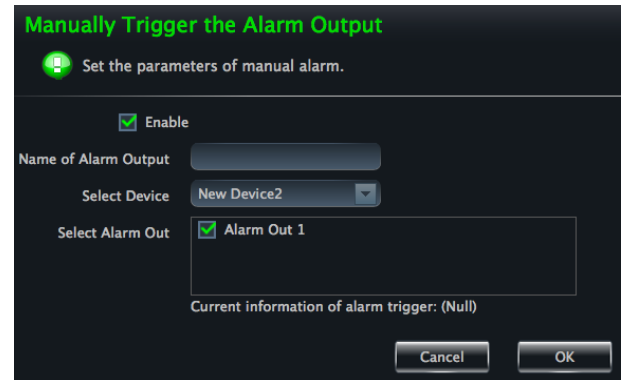
In the interface of Basic Configuration, click “*Restore System Configuration Data*” to import the configuration data.

### 10.3 Manually Trigger the Alarm Output

In the control panel, click “*Manual Alarm Output*” under Basic Configuration to enter the interface.

Check “Enable”; select a corresponding device and alarm output; then edit a name for it.

Then an icon  will appear at the right bottom of the software. Clicking this icon will trigger the alarm of selected device.





28492 CONSTELLATION ROAD VALENCIA, CA 91355  
WWW.VITEKCCTV.COM | 888-VITEK-70

VERSION 1  
08/2015